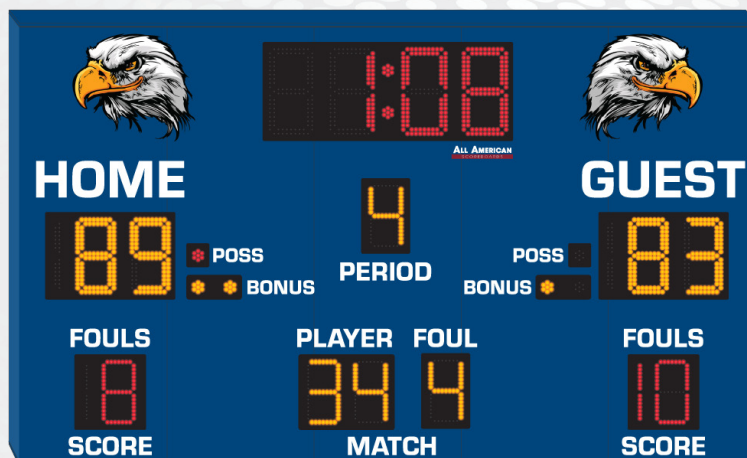


# PRODUCT SPECIFICATIONS

## BASKETBALL SCOREBOARD

# ALL AMERICAN

## SCOREBOARDS®



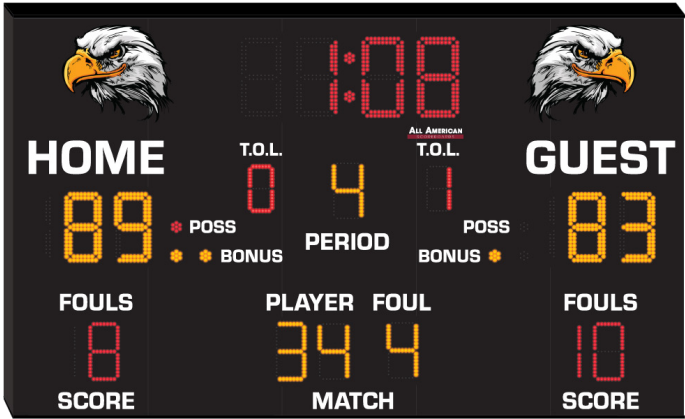
<b>OVERALL DIMENSION</b>	6' High x 10' Wide x 5" Depth. Style available in other sizes.
<b>CONSTRUCTION</b>	Fabricated 20 and 22 GA Powder Coated Galvanneal.
<b>INFORMATION</b>	Game Time (14" Red), Home & Guest Scores up to 199 (12" Amber), Period (10" Amber), Possession Indicators (2" Red), Bonus Indicators (2" Amber), Fouls (10" Red), Player/Foul (10" Amber).
<b>CAPTIONS</b>	Scores (6"), Poss, Bonus (2.25"), Period, Fouls, Score, Player Foul, Match (3") Available graphic areas of approx. 18"x 36 (each).
<b>HORN</b>	Included 100dB internal horn. 110 dB external trumpet horn available, recommended to be wired at time of manufacture.
<b>ELECTRONICS / DIGITS</b>	100% solid state, microprocessor controlled system with locking connectors. Ultra bright, exposed Red and Amber LED digits.
<b>SERVICING</b>	Sign will be serviceable by removing the home score digit pan to access components.
<b>COMMUNICATION</b>	Radio communication is standard using a 2.4 GHz Frequency hopping spread spectrum transceiver. Hardwire optional on scoreboard, recommended to be installed at time of manufacture.
<b>POWER REQUIREMENTS</b>	120VAC, 2.6 Amp. Includes 6' power cable exiting the top left of the cabinet with standard grounded 3 prong connector. 20 Amp circuit recommended.
<b>INSTALLATION</b>	May be mounted to nearly any wall surface via lifting/mounting brackets, no other hardware supplied. Intended for dry locations.
<b>ESTIMATED WEIGHT</b>	217 lbs. Shipping Dimensions: (1)126x24x95,426#, (2)126x27x95, 644#
<b>WARRANTY</b>	Five year guarantee against defects in materials and workmanship. Factory repair service for parts in warranty. Union Label. UL Certified.
<b>ADDITIONAL OPTIONS</b> MODEL NUMBER + ( )	Time Outs Left (TOL) in lieu of graphics, Protective Lens Kit (PLK + Model Number). White, Green, Amber digits available (Red and Amber as shown is standard). Deluxe Trim (different colored powdercoated top and bottom caps). LED Team Names available.
<b>AVAILABLE CONTROL CONSOLE</b> (SOLD SEPARATELY)	<b>MSC9000 (Multi-sport Desktop Console)</b> Extruded Aluminum, high impact low profile microprocessor control console. 5" high x 10.25" wide x 9" deep. Weight: 4.3 lbs. Radio (1600 ft) is standard, simultaneous hardwire option included. Internal rechargeable battery. Switch between multiple sports by removing and replacing the slip sheet. <b>HRBK9000 (Handheld Basketball Remote)</b> 6.5" high x 3" wide x 1" deep. Radio (500 ft) is standard. Internal rechargeable battery.

PRODUCT SPECIFICATIONS

BK9106 OPTIONS

BK9106TOL

8" Time Outs Left (TOL) red digits added.



LED TEAM NAMES

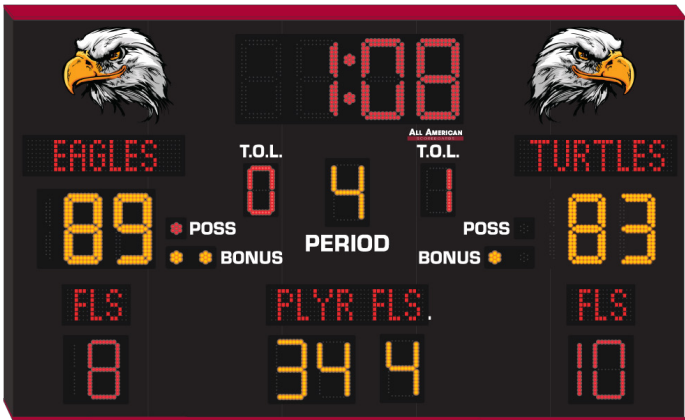
6" LED Programmable Team Names  
8x40 Pixel Matrix, 6" High Fonts

LED CAPTIONS

6" LED Programmable Captions  
Smart Captions Automatically Switch when  
other sports are selected.

LED Team Names and Captions require MSC9000  
Console.

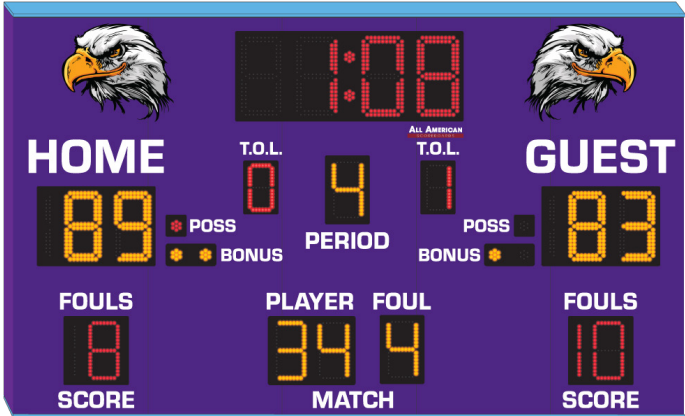
BLACK Scoreboard with RED Deluxe Trim Shown LED TEAM NAMES and  
LED CAPTIONS.



Deluxe Trim

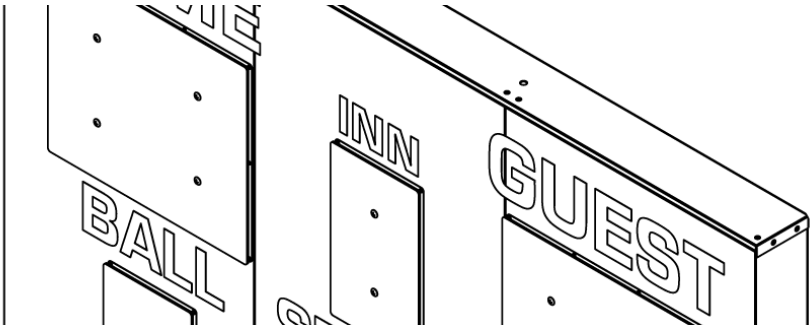
Top and bottom caps powdercoated a different  
color than rest of scoreboard. This is a modern,  
more permanent version of edge trim.

PURPLE Scoreboard with SKYT BLUE Deluxe Trim Shown.



PLK + MODEL NUMBER

Protective Lenses Installed in front of each  
digit assembly.



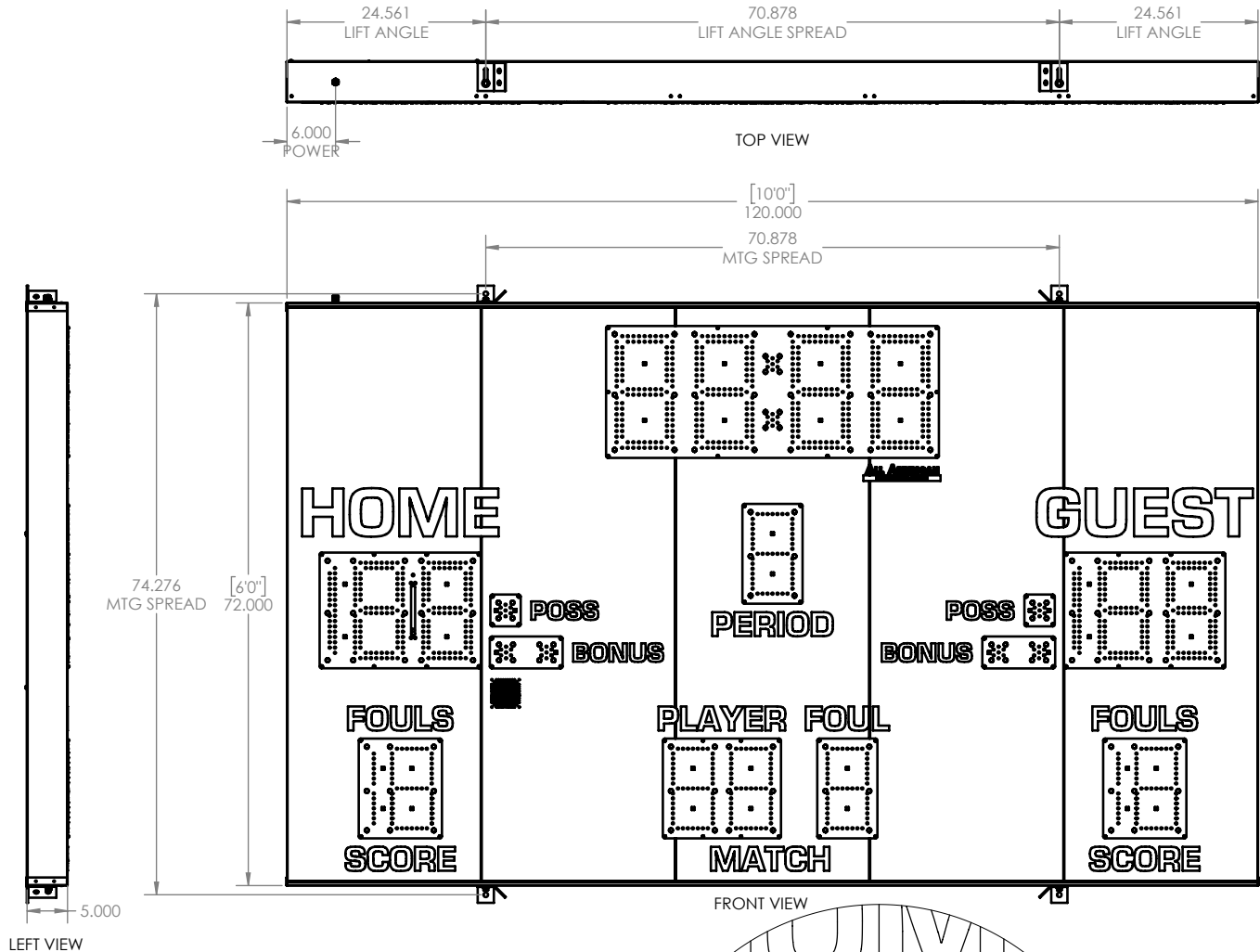
# BK9106 Installation

Recommended for Indoor Installation only.

Scoreboard MUST be mounted in at least 4 points. See MTG SPACING for distance between mounting holes.

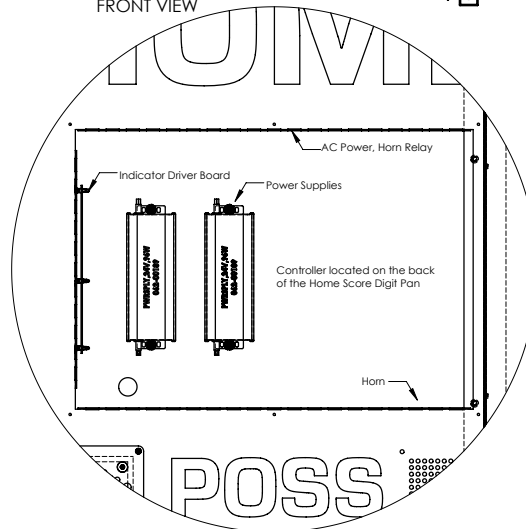
Using lifting angle, lift scoreboard to desired location and bolt to wall or structure. Because wall types and structure may vary, type of bolt cannot be recommended nor supplied by All American Scoreboards. Refer to scoreboard weight and wall type before determining installation method. All American Scoreboards (AAS) and/or Everbrite, LLC shall not be held liable for improper installation.

AAS recommends the scoreboard be installed by a licensed contractor, and must meet all local and national building codes. AAS recommends using a boom, forklift, or crane of suitable size to use in installation.



## SCOREBOARD SPECIFICATIONS

- OVERALL DIMENSIONS OF SIGN:  
HEIGHT: 6'-0"  
WIDTH: 10'-0"  
DEPTH: 5"  
EST. WEIGHT: 217 LBS
- AREA OF SIGN: 60
- POWER SUPPLY: (1) 24V/96W POWER SUPPLY  
INPUT: 2.6A @ 100-270VAC, 6' 120VAC POWER CORD INCLUDED
- (1) 20 AMP CIRCUIT, 60Hz UL 48 & NEC COMPLIANT
- SIGN IS TO BE MANUFACTURED TO UL 48 SPECIFICATIONS.
- MAXIMUM DESIGN WINDLOAD: 35 PSF
- SIGN WILL BE SERVICEABLE BY REMOVING THE HOME SCORE FACE TO ACCESS ELECTRICAL COMPONENTS.



WITH DIGIT PANEL REMOVED FOR CLARITY

rev. 7/9/2024