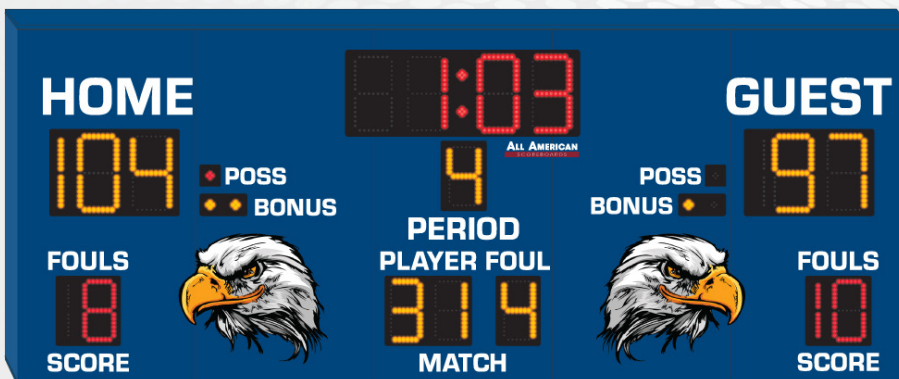


PRODUCT SPECIFICATIONS
BASKETBALL SCOREBOARD

ALL AMERICAN
SCOREBOARDS ®

INDOOR SCOREBOARD
BK9104



STANDARD COLORS (CUSTOM COLORS AVAILABLE)



OVERALL DIMENSION	4' High x 10' Wide x 5" Depth.
CONSTRUCTION	Fabricated 20 and 22 GA Powder Coated Galvanneal.
INFORMATION	Game Time (10" Red), Home & Guest Scores up to 199 (10" Amber), Period (8" Amber), Possession Indicators (1" Red), Bonus Indicators (1" Amber), Fouls (8" Red), Player/Foul (8" Amber).
CAPTIONS	Scores (5"), Period (3"), Poss, Bonus (2.25"), Fouls, Score, Player Foul, Match (2.5"). Available graphic areas of approx. 20"x 30 (each).
HORN	Included 100dB internal horn. 110 dB external trumpet horn available, recommended to be wired at time of manufacture.
ELECTRONICS / DIGITS	100% solid state, microprocessor controlled system with locking connectors. Ultra bright, exposed Red and Amber LED digits.
SERVICING	Sign will be serviceable by removing the home score digit pan to access components.
COMMUNICATION	Radio communication is standard using a 2.4 GHz Frequency hopping spread spectrum transceiver. Hardwire optional on scoreboard, recommended to be installed at time of manufacture.
POWER REQUIREMENTS	120VAC, 2.6 Amp. Includes 6' power cable exiting the top left of the cabinet with standard grounded 3 prong connector. 20 Amp circuit recommended.
INSTALLATION	May be mounted to nearly any wall surface via lifting/mounting brackets, no other hardware supplied. Intended for dry locations.
ESTIMATED WEIGHT	153 lbs. Shipping Dimensions: (1)126Lx25Wx71H, 417 lbs (2)126x27x71, 570 lbs
WARRANTY	Five year guarantee against defects in materials and workmanship. Factory repair service for parts in warranty. Union Label. UL Certified.
ADDITIONAL OPTIONS MODEL NUMBER + ()	Time Outs Left (TOL) in lieu of graphics, Protective Lens Kit (PLK + Model Number). White, Green, Amber digits available (Red and Amber as shown is standard). Deluxe Trim (different colored powdercoated top and bottom caps). LED Team Names available.
AVAILABLE CONTROL CONSOLE (SOLD SEPARATELY)	MSC9000 (Multi-sport Desktop Console) Extruded Aluminum, high impact low profile microprocessor control console. 5" high x 10.25" wide x 9" deep. Weight: 4.3 lbs. Radio (1600 ft) is standard, simultaneous hardwire option included. Internal rechargeable battery. Switch between multiple sports by removing and replacing the slip sheet. HRBK9000 (Handheld Basketball Remote) 6.5" high x 3" wide x 1" deep. Radio (500 ft) is standard. Internal rechargeable battery.

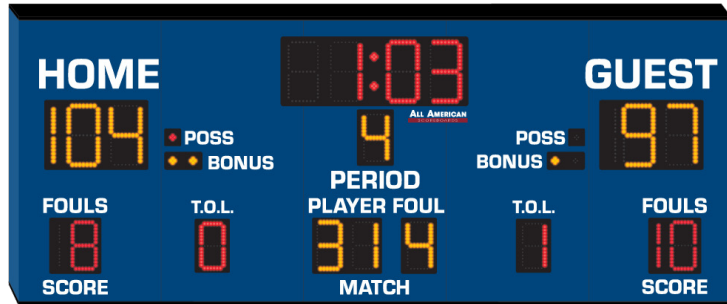
PRODUCT SPECIFICATIONS
BK9104 OPTIONS

ALL AMERICAN
SCOREBOARDS ®

BK9104TOL

8" Time Outs Left (TOL) red digits added and custom graphics removed.

BLUE Scoreboard with BLACK Trim Shown.



LED TEAM NAMES

6" LED Programmable Team Names
 8x40 Pixel Matrix, 6" High Fonts

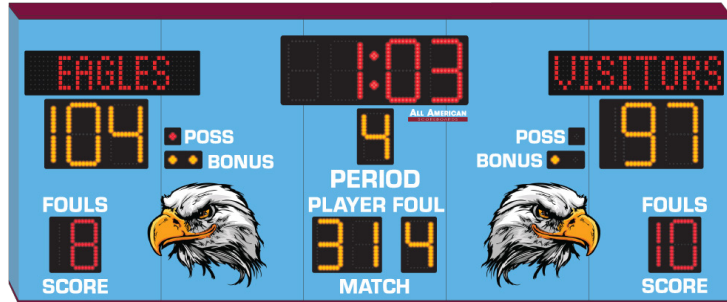
LED CAPTIONS

6" LED Programmable Captions
 Smart Captions Automatically Switch when other sports are selected.

LED Team Names and Captions require MSC9000 Console.

SKY BLUE Scoreboard with BURGUNDY Trim Shown with LED TEAM NAMES.

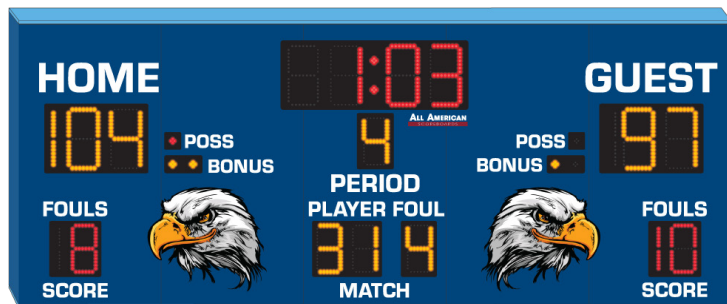
BURGUNDY Scoreboard with NAVY Trim Shown with WHITE LED TEAM NAMES and TIME OUTS LEFT.



Deluxe Trim

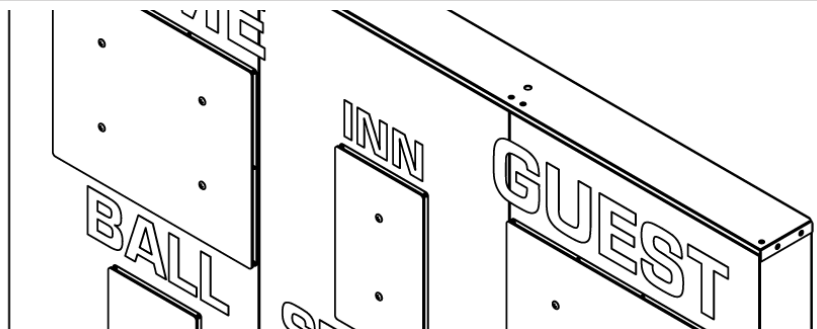
Top and bottom caps powdercoated a different color than rest of scoreboard. This is a modern, more permanent version of edge trim.

BLUE Scoreboard with SKY BLUE Deluxe Trim Shown.



PLK + MODEL NUMBER

Protective Lenses Installed in front of each digit assembly.



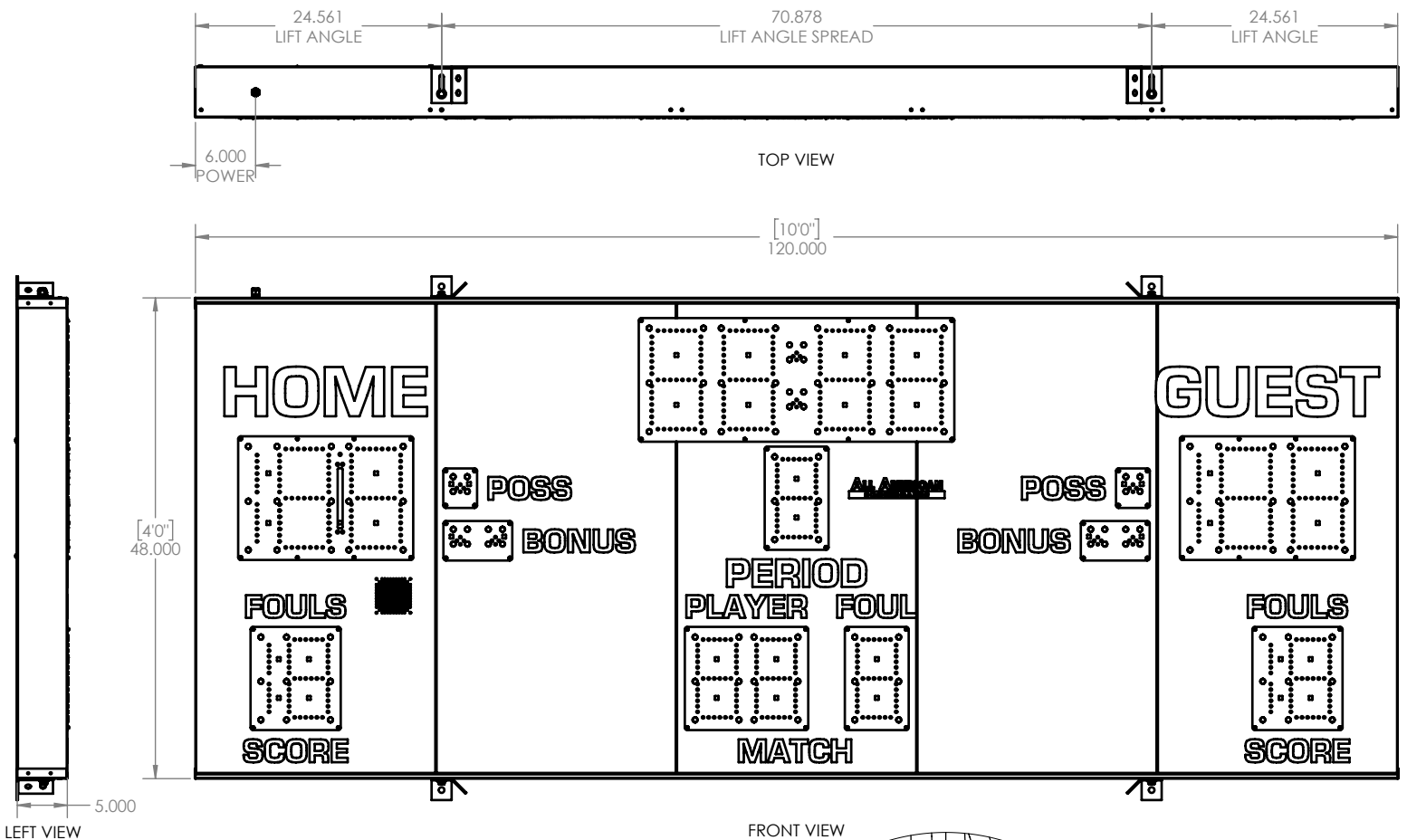
BK9104 Installation

Recommended for Indoor Installation only.

Scoreboard MUST be mounted in at least 4 points. See MTG SPACING for distance between mounting holes.

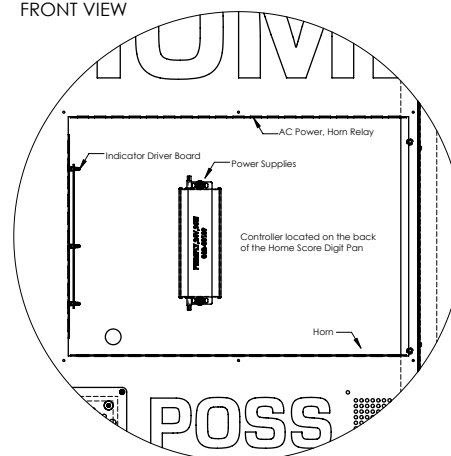
Using lifting angle, lift scoreboard to desired location and bolt to wall or structure. Because wall types and structure may vary, type of bolt cannot be recommended nor supplied by All American Scoreboards. Refer to scoreboard weight and wall type before determining installation method. All American Scoreboards (AAS) and/or Everbrite, LLC shall not be held liable for improper installation.

AAS recommends the scoreboard be installed by a licensed contractor, and must meet all local and national building codes. AAS recommends using a boom, forklift, or crane of suitable size to use in installation.



SCOREBOARD SPECIFICATIONS

- OVERALL DIMENSIONS OF SIGN:
HEIGHT: 4'-0"
WIDTH: 10'-0"
DEPTH: 5"
EST. WEIGHT: 154 LBS
- AREA OF SIGN: 40
- POWER SUPPLY: (1) 24V/96W POWER SUPPLIES
INPUT: 1.3A @ 100-270VAC, 6' 120VAC POWER CORD INCLUDED
- (1) 20 AMP CIRCUIT, 60Hz UL 48 & NEC COMPLIANT
- SIGN IS TO BE MANUFACTURED TO UL 48 SPECIFICATIONS.
- MAXIMUM DESIGN WINDLOAD: 35 PSF
- SIGN WILL BE SERVICEABLE BY REMOVING THE HOME SCORE FACE TO ACCESS ELECTRICAL COMPONENTS.



WITH DIGIT PANEL REMOVED FOR CLARITY