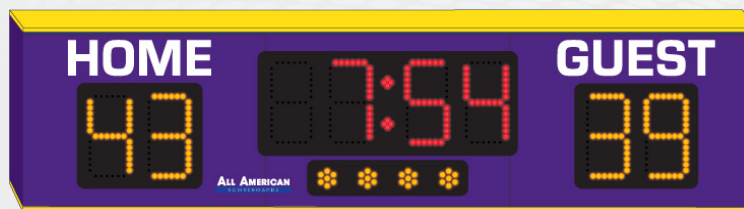


PRODUCT SPECIFICATIONS

BASKETBALL SCOREBOARD

INDOOR SCOREBOARD BK9063

STANDARD COLORS (CUSTOM COLORS AVAILABLE)



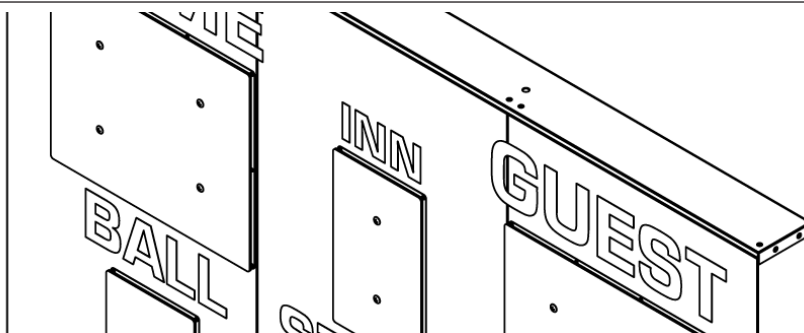
DELUXE TRIM
OPTION SHOWN

OVERALL DIMENSION	1'6" High x 6' Wide x 5" Depth. Style available in other sizes.
CONSTRUCTION	Fabricated 20 and 22 GA Powder Coated Galvanneal.
INFORMATION	Game Time (8" Red), Home & Guest Scores up to 99 (8" Amber), Period Indicators (2" Amber)
CAPTIONS	HOME, GUEST (3")
HORN	Included 100dB internal horn. 110 dB external trumpet horn available, recommended to be wired at time of manufacture.
ELECTRONICS / DIGITS	100% solid state, microprocessor controlled system with locking connectors. Ultra bright, exposed Red and Amber LED digits.
SERVICING	Sign will be serviceable by removing the home score digit pan to access components.
COMMUNICATION	Radio communication is standard using a 2.4 GHz Frequency hopping spread spectrum transceiver. Hardwire optional on scoreboard, recommended to be installed at time of manufacture.
POWER REQUIREMENTS	120VAC, 1.3 Amp. Includes 6' power cable exiting the top left of the cabinet with standard grounded 3 prong connector. Components can accept 100-270 VAC. 20 Amp circuit recommended.
INSTALLATION	May be mounted to nearly any wall surface via lifting/mounting brackets, no other hardware supplied. Intended for dry locations.
ESTIMATED WEIGHT	47 lbs. Shipping Dimensions: (1)78x24x53, 103#, (2)78x27x53, #150
WARRANTY	Five year guarantee against defects in materials and workmanship. Factory repair service for parts in warranty. Union label. UL Certified.
ADDITIONAL OPTIONS	Protective Lens Kit (PLK + Model Number). White, Green, Amber digits available (Red and Amber as shown is standard).
AVAILABLE CONTROL CONSOLE (SOLD SEPARATELY)	<p>MSC9000 (Multi-sport Desktop Console) Extruded Aluminum, high impact low profile microprocessor control console. 5" high x 10.25" wide x 9" deep. Weight: 4.3 lbs. Radio (1600 ft) is standard, simultaneous hardwire option included. Internal rechargeable battery. Switch between multiple sports by removing and replacing the slip sheet.</p> <p>HRBK9000 (Handheld Basketball Remote) 6.5" high x 3" wide x 1" deep. Radio (500 ft) is standard. Internal rechargeable battery.</p>

PRODUCT SPECIFICATIONS
BK9063 OPTIONS

PLK + MODEL NUMBER

Protective Lenses Installed in front of each digit assembly.



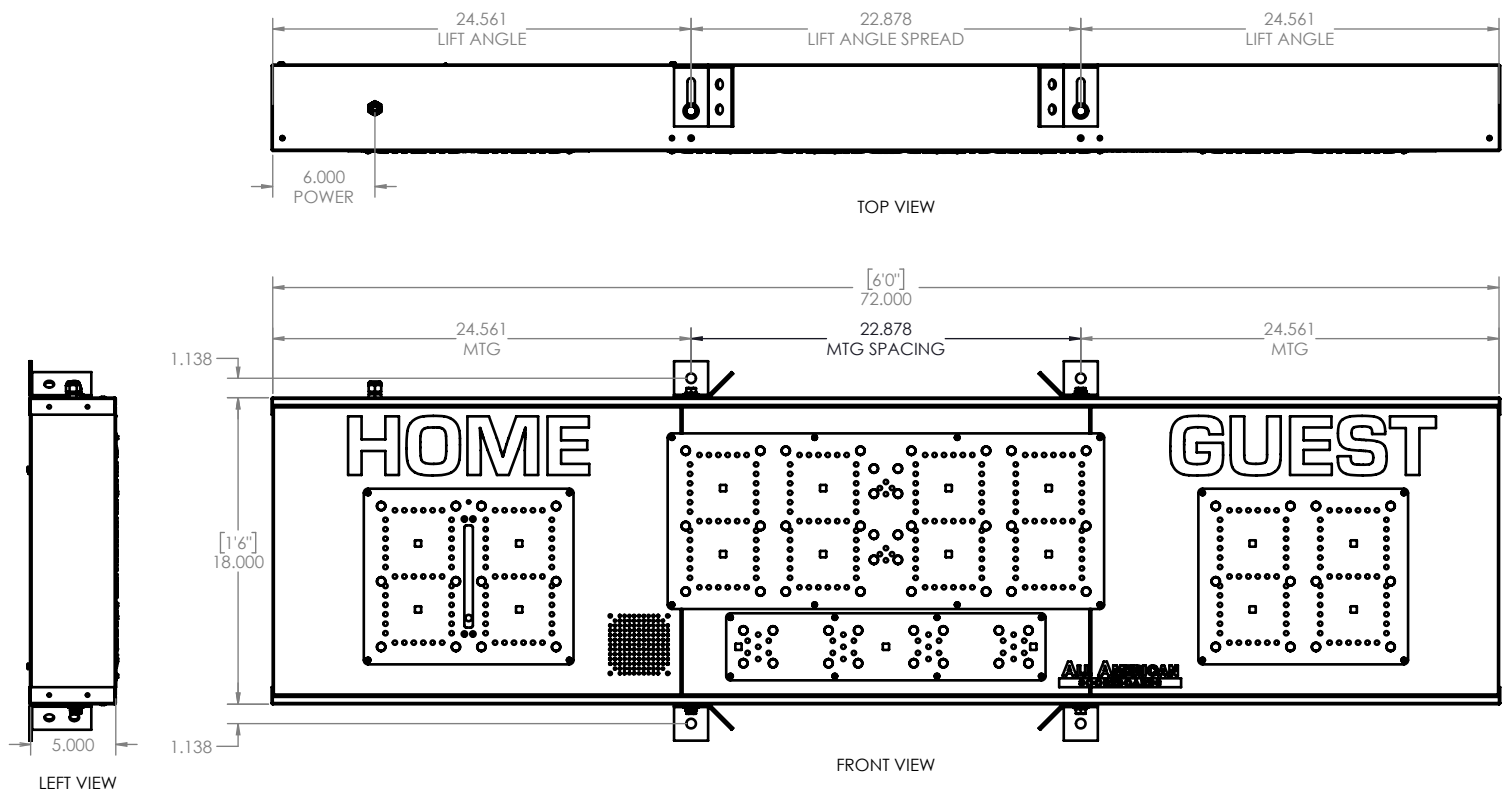
BK9063 Installation

Recommended for Indoor Installation only.

Scoreboard MUST be mounted in at least 4 points. See MTG SPACING for distance between mounting holes.

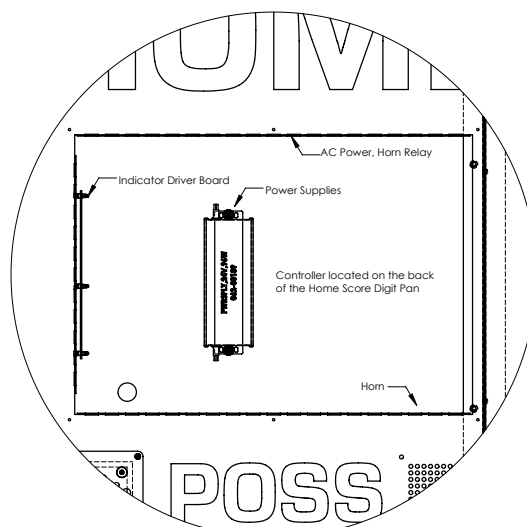
Using lifting angle, lift scoreboard to desired location and bolt to wall or structure. Because wall types and structure may vary, type of bolt cannot be recommended nor supplied by All American Scoreboards. Refer to scoreboard weight and wall type before determining installation method. All American Scoreboards (AAS) and/or Everbrite, LLC shall not be held liable for improper installation.

AAS recommends the scoreboard be installed by a licensed contractor, and must meet all local and national building codes. AAS recommends using a boom, forklift, or crane of suitable size to use in installation.



SCOREBOARD SPECIFICATIONS

- OVERALL DIMENSIONS OF SIGN:
 - HEIGHT: 1'-6"
 - WIDTH: 6'-0"
 - DEPTH: 5"
 - EST. WEIGHT: 47.375 LBS
- AREA OF SIGN: 9
- POWER SUPPLY: (1) 24V/96W POWER SUPPLY
INPUT: 1.3A @ 100-270VAC, 6' 120VAC POWER CORD INCLUDED
- (1) 20 AMP CIRCUIT, 60Hz UL 48 & NEC COMPLIANT
- SIGN IS TO BE MANUFACTURED TO UL 48 SPECIFICATIONS.
- MAXIMUM DESIGN WINDLOAD: 35 PSF
- SIGN WILL BE SERVICEABLE BY REMOVING THE HOME SCORE FACE TO ACCESS ELECTRICAL COMPONENTS.



WITH DIGIT PANEL REMOVED FOR CLARITY

rev. 7/9/2024