


OUTDOOR SCOREBOARD 8814 Auto Racing	5-Position racing scoreboard. Qualifying Timer/Lap Counter. Able to connect to Orbits AMB or Westhold RMonitor Protocol Device (sold by others). May also connect to an Electric Eye (sold by others) through the pendant switch connector on the console.
OVERALL DIMENSION	20' high x 8' wide x 5.0" deep. Unistrut mounting (standard) adds an additional 1.625" Depth (pole mount) or an additional 3.25 (wall mount).
INFORMATION DISPLAYED	Lap Counter/Qualifying Timer, Positions 1-5, Car Number.
DIGITS	21" Bright Red, 7-Segment LEDs.
INDICATORS	None.
CAPTIONS	White vinyl letters.
HORN	Horn not included. External 100 dB Vibrating Horn or 20dB Trumpet Horn are available.
CONSTRUCTION	5" extruded aluminum frame, .093" thick, mill finish. Faces made from shatter proof polycarbonate.
STANDARD FACE COLORS (Custom Colors Available)	<div> <div>BLACK</div> <div>NAVY</div> <div>BLUE</div> <div>LIGHT BLUE</div> <div>PURPLE</div> <div>BURGUNDY</div> <div>RED</div> <div>FOREST GREEN</div> <div>GREEN</div> </div>
ELECTRONICS	100% solid state, microprocessor controlled system.
SERVICING	Front access for ease of servicing. Plug in modules for ease of replacement.
MICROPROCESSOR CONTROL CONSOLE	 <p>Sold separately. Extruded Aluminum, high impact low profile microprocessor control console, latest state of the art, user friendly. Size: 13.25" wide x 5" high x 9" deep. Weight: 6 lbs. Microprocessor to be supplied with 25 feet of cable (hardwire). Microprocessor control console with membrane keyboard provides for direct entry of all information. Radio Control is available.</p>
JUNCTION BOX	One outdoor rated junction box, 5" x 3" with cover and ethernet cable. (Hardwire)
DATA CABLE	Twisted pair, direct burial, RJ45 Connectors (Hardwire).
POWER REQUIREMENTS	115/230 VAC. 50/60 Hz. Minimum one 20A circuit is recommended.
INSTALLATION	May be installed on two posts. Mounting brackets are supplied with scoreboard.
WEIGHT	Net 560 lbs / Shipping 980 lbs.
WARRANTY	Five year guarantee against defects in materials and workmanship. Factory repair service for parts in warranty. Union label. UL Certified.

STANDARD VARIATIONS

Model + RV2

Radio upgrade. 2.4 GHz spread spectrum, 1500' expected range.

COMMON ACCESSORIES - Sold Separately.

232/485 Converter

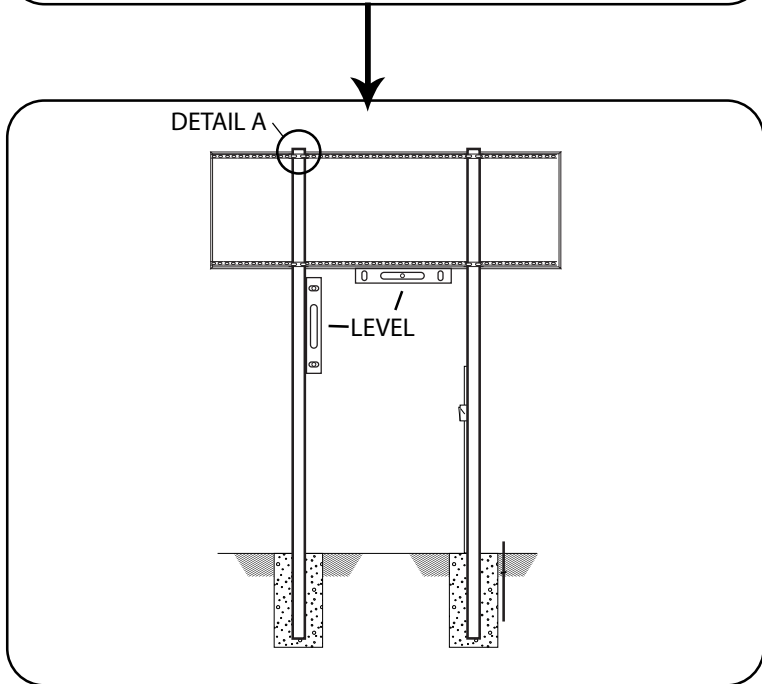
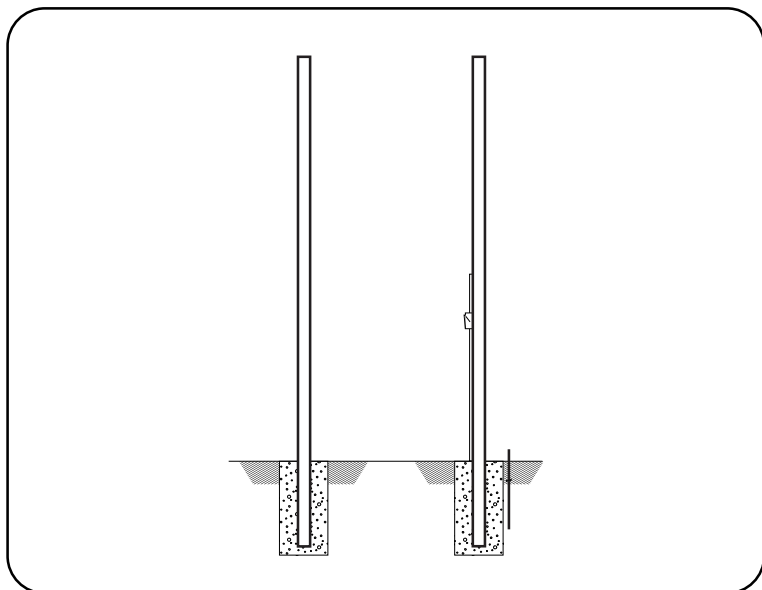
Part Number# 019-00001. For Automated Race Monitor Control.

DB9/RJ45 Adapter

Part Number# 019-00002. For Automated Race Monitor Control.

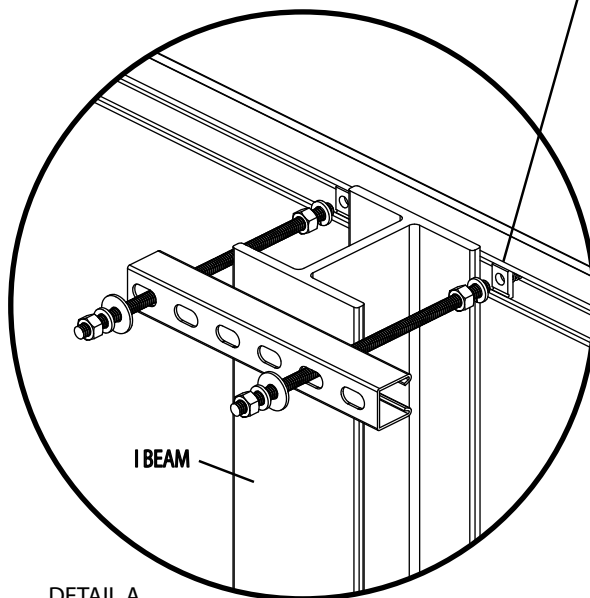
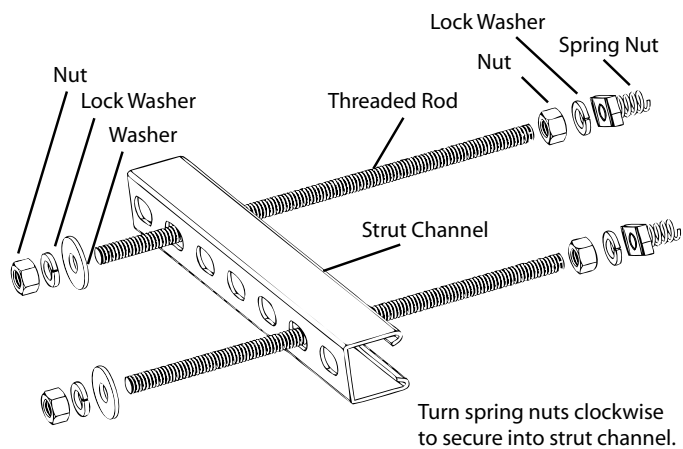
Typical Single-Cabinet Scoreboard Installation Illustration

NUMBER OF POLES SHOWN ONLY FOR REFERENCE. MUST BE DETERMINED LOCALLY BY LICENCED ENGINEER.

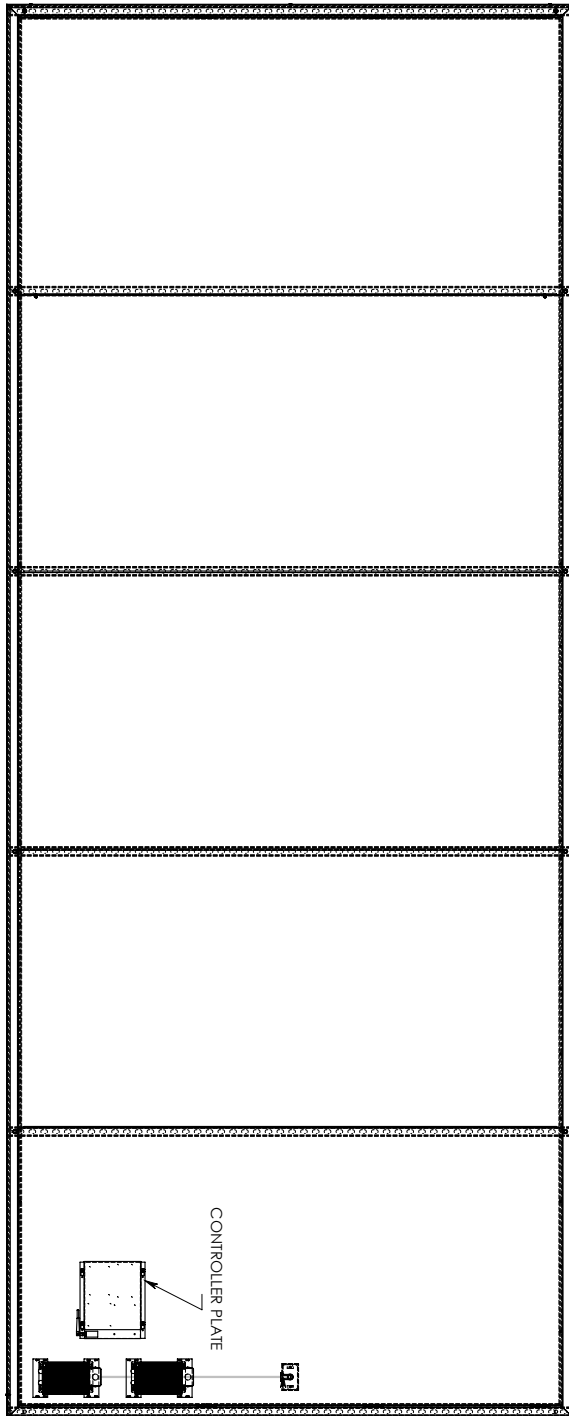


Mounting Kit

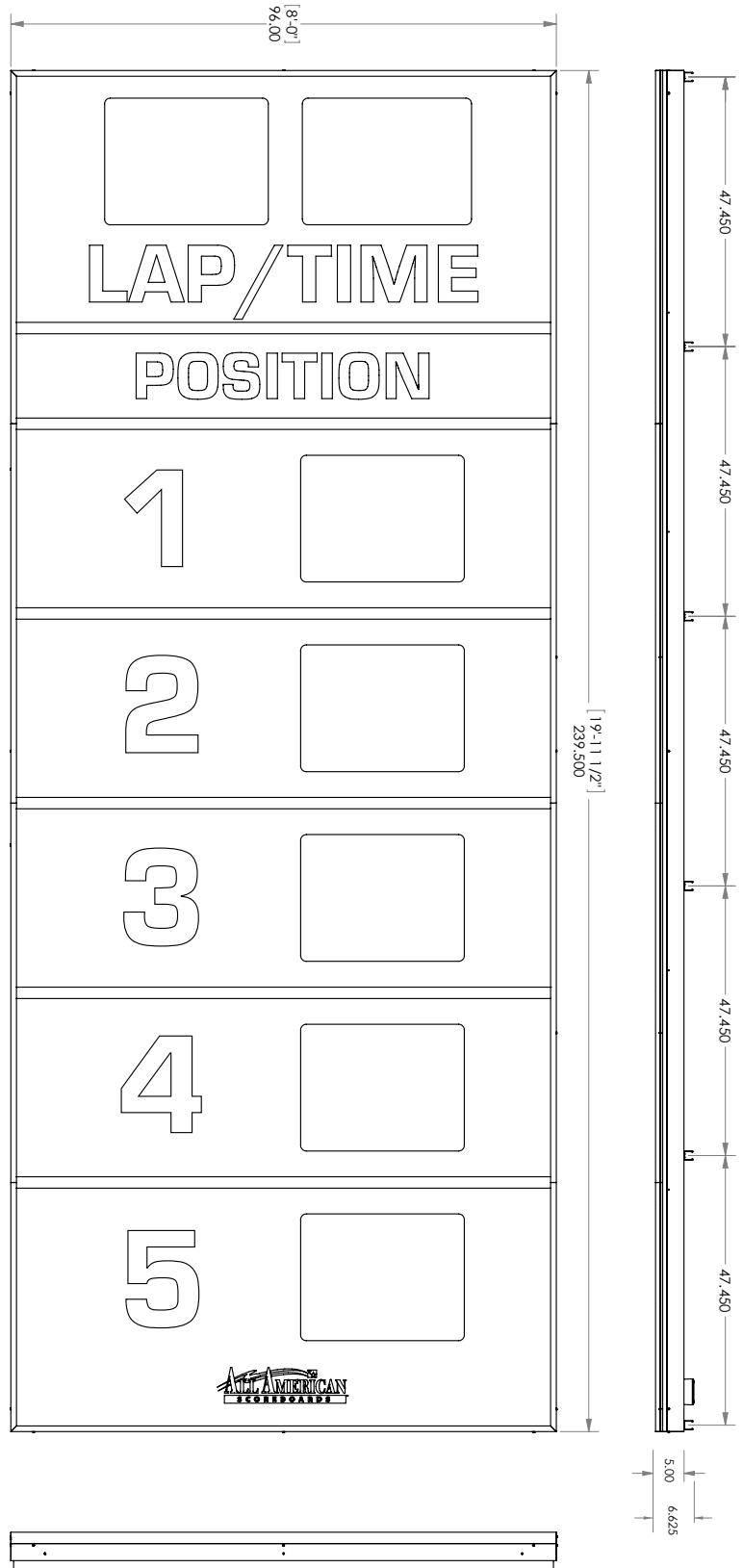
Quantity of kits depends on board and number of poles required. Installed at every point where a pole and a strut channel intersect. *Local ordinances, soil conditions and wind load requirements may require additional structure.*



DETAIL A.
Pressure hold scoreboard cabinets to poles.
Secure with weld.

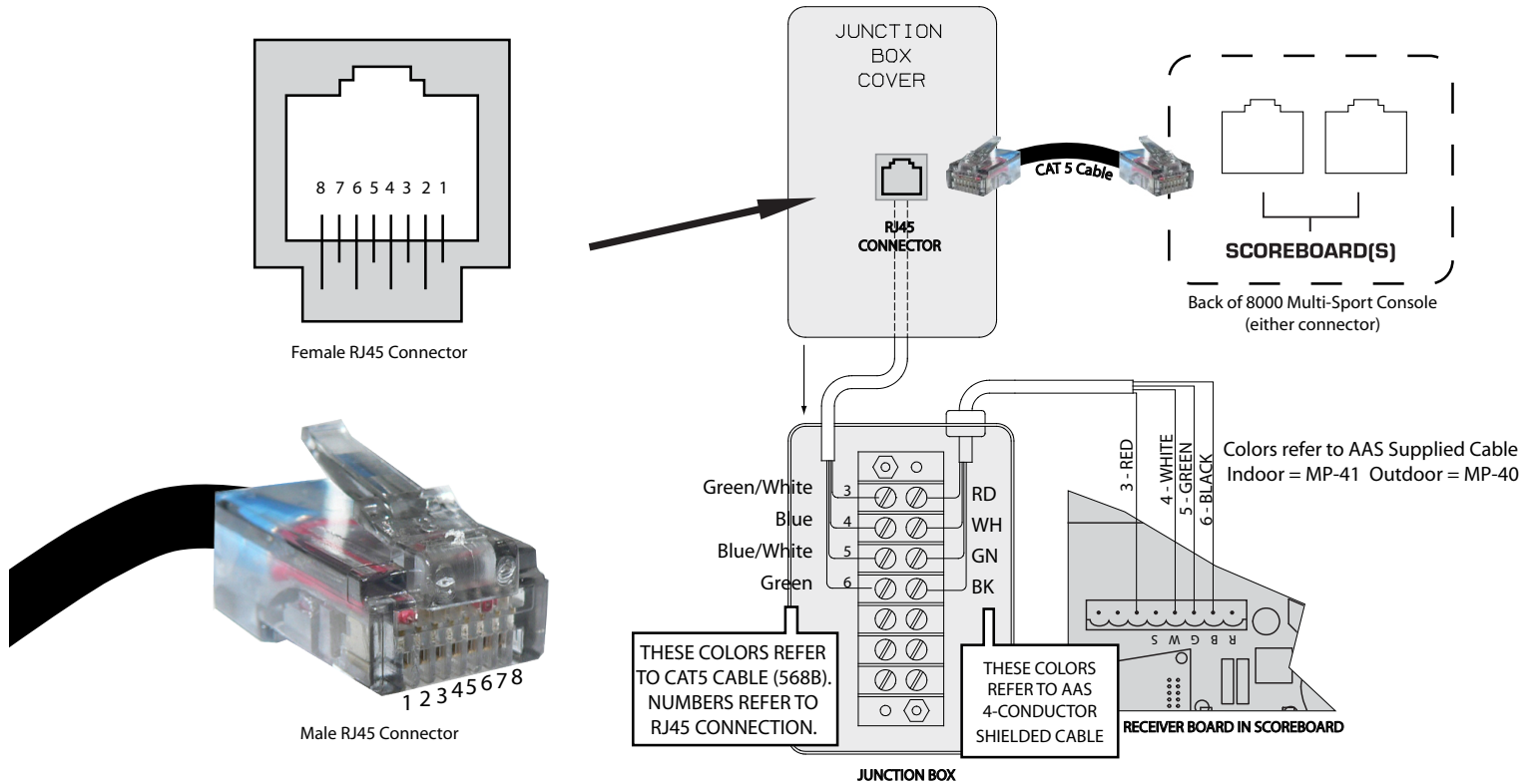


FRONT VIEW
(DOOR & FACE(S) REMOVED)



Hardwire Scoreboard Wiring

With a Standard Junction Box



Wiring a Supplemental Display

With a Single Junction Box

