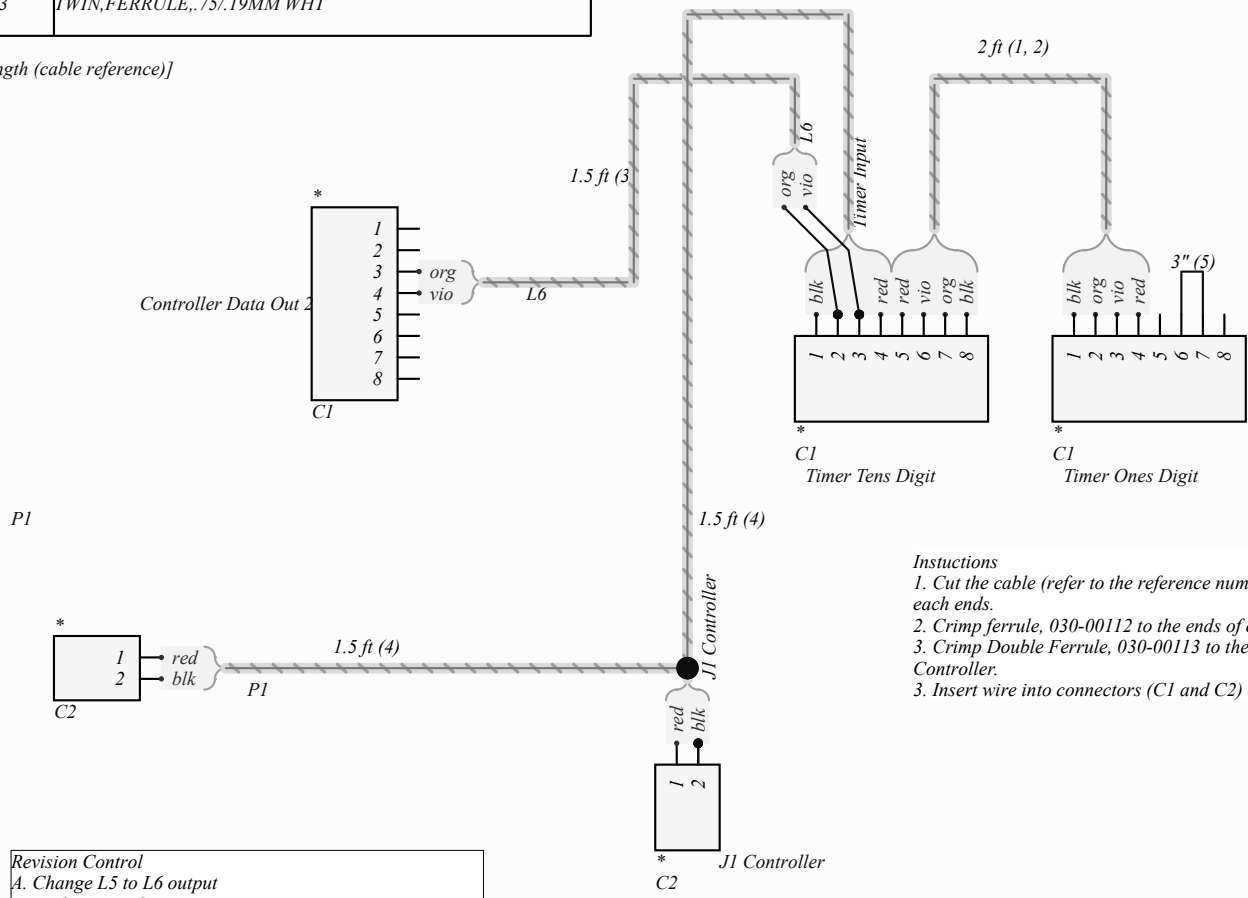
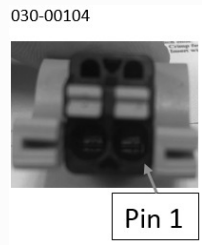


QTY	Ref	Item Number	Description
2'	1	025-00046	WIRE,PVC 18AWG 300V TWSTD,O/P
2'	2	025-00099	WIRE,PVC 18AWG 300V TWSTD,
1.5'	3	025-00057	WIRE,TWSTD,18AWG,O/V BLKJACKT
3'	4	W100134P	CABLE,18/2 R/B GRY JKT 105C
3	C1	030-00109	Plug, 8PIN, 5.08mm,BLK/ORG
2	C2	030-00104	Plug, 2PIN, 2.08mm,BLK/ORG
1	P1	062-00189	PWRSPLY,24V,96W
3"	5	800118	WIRE,PVC 18AWG 300VSTR VIOLET
18	-	030-00112	BULK,FERRULE, .75/.14MM WHT
2	-	030-00113	TWIN,FERRULE, .75/.19MM WHT

Cable specification [length (cable reference)]



- Instructions**
1. Cut the cable (refer to the reference number) to length. Label each end.
 2. Crimp ferrule, 030-00112 to the ends of each cable wire.
 3. Crimp Double Ferrule, 030-00113 to the ends of C2, J1 Controller.
 3. Insert wire into connectors (C1 and C2) according to pinout.

Revision Control
 A. Change L5 to L6 output
 B. Update Length

Title
 FB9039/FB9049

