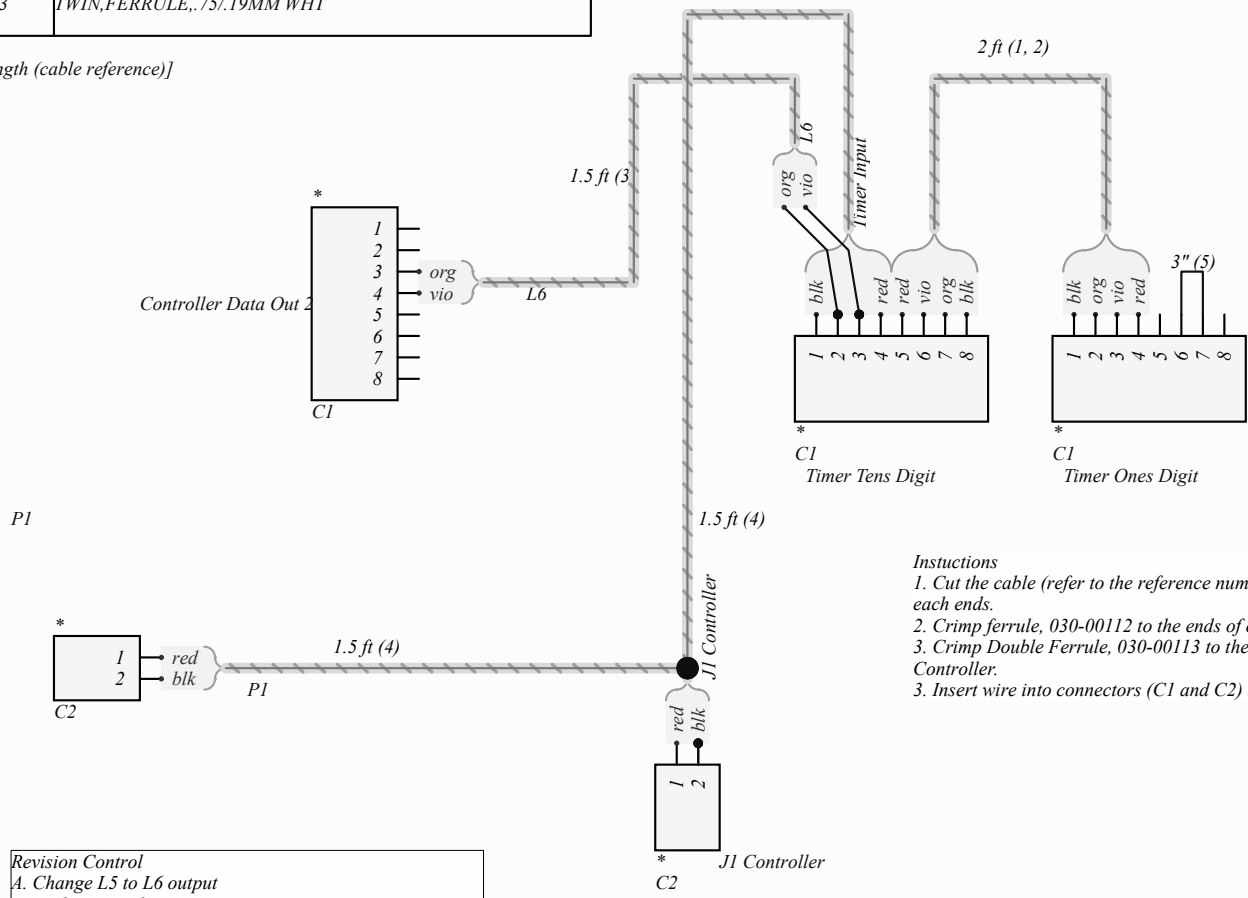
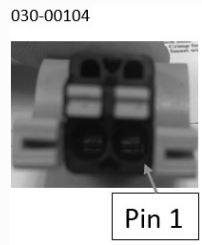


QTY	Ref	Item Number	Description
2'	1	025-00046	WIRE,PVC 18AWG 300V TWSTD,O/P
2'	2	025-00099	WIRE,PVC 18AWG 300V TWSTD,
1.5'	3	025-00057	WIRE,TWSTD,18AWG,O/V BLKJACKT
3'	4	W100134P	CABLE,18/2 R/B GRY JKT 105C
3	C1	030-00109	Plug, 8PIN, 5.08mm,BLK/ORG
2	C2	030-00104	Plug, 2PIN, 2.08mm,BLK/ORG
1	P1	062-00189	PWRSPLY,24V,96W
3"	5	800118	WIRE,PVC 18AWG 300VSTR VIOLET
18	-	030-00112	BULK,FERRULE, .75/.14MM WHT
2	-	030-00113	TWIN,FERRULE, .75/.19MM WHT

Cable specification [length (cable reference)]



- Instructions**
1. Cut the cable (refer to the reference number) to length. Label each end.
  2. Crimp ferrule, 030-00112 to the ends of each cable wire.
  3. Crimp Double Ferrule, 030-00113 to the ends of C2, J1 Controller.
  3. Insert wire into connectors (C1 and C2) according to pinout.

**Revision Control**  
 A. Change L5 to L6 output  
 B. Update Length

Title  
 FB9039/FB9049

