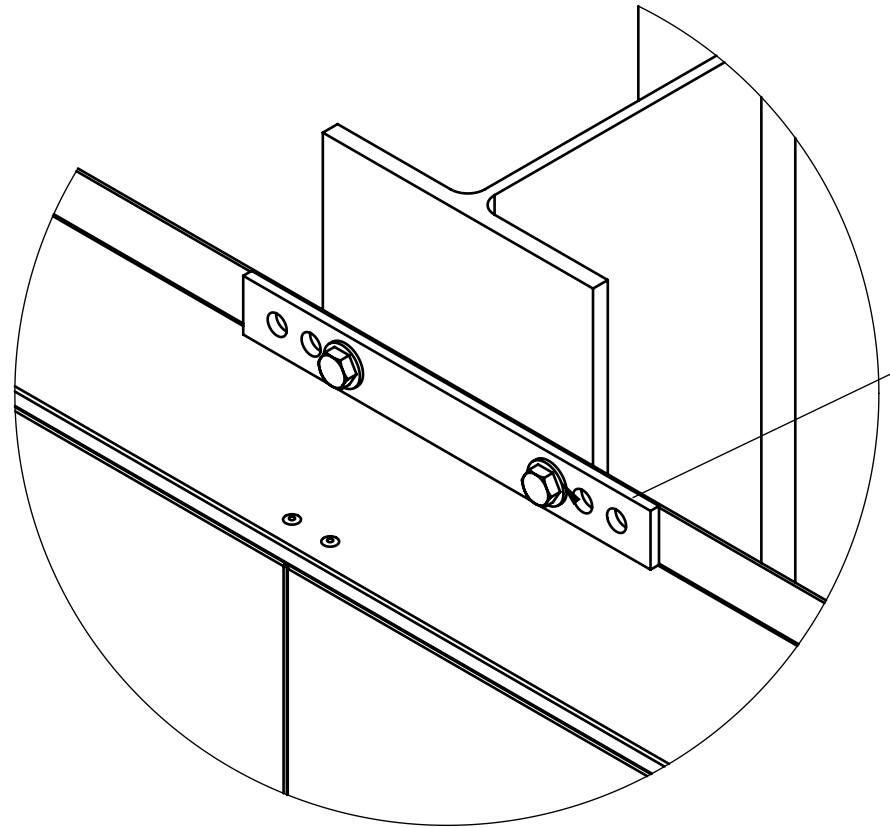
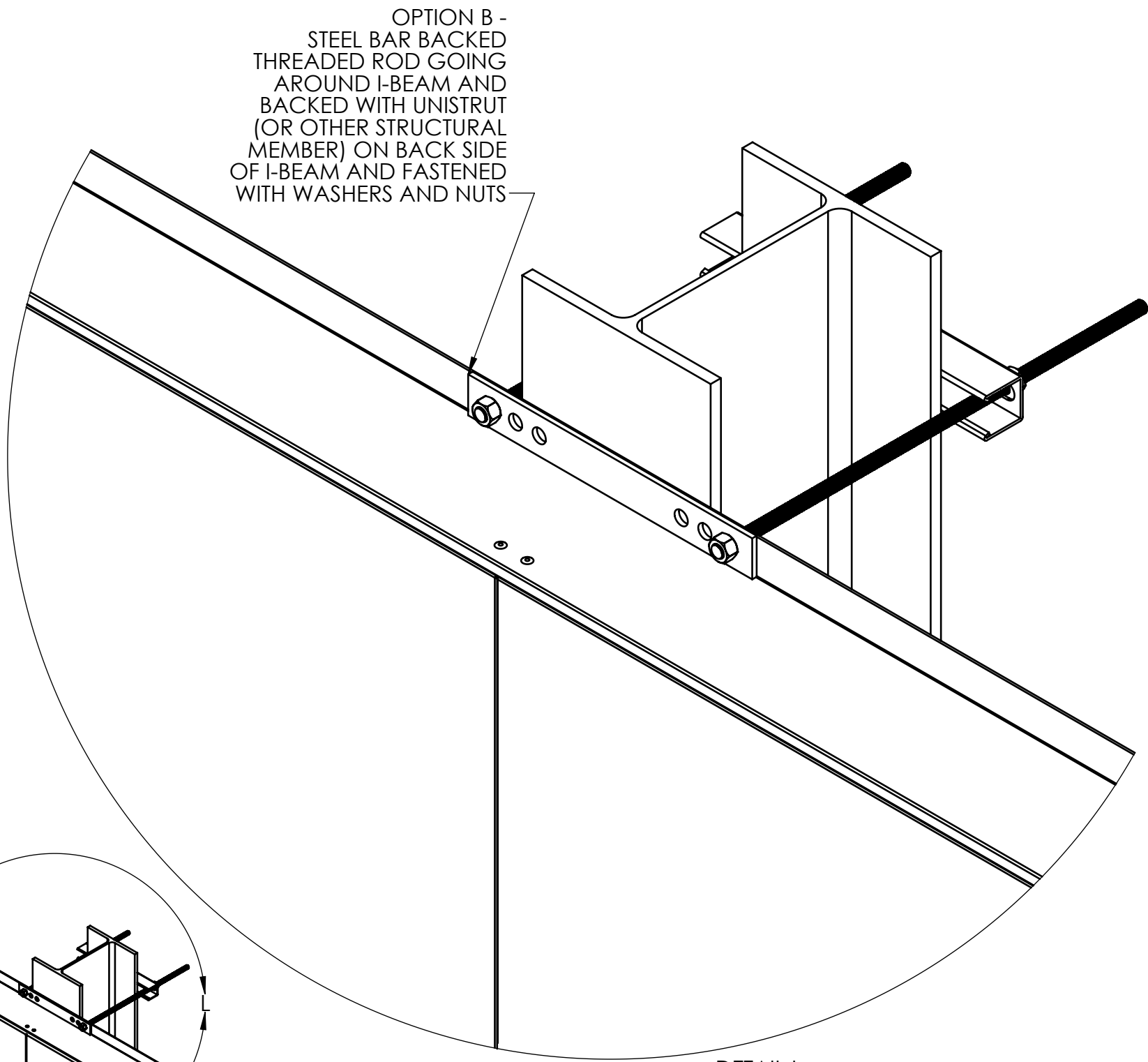


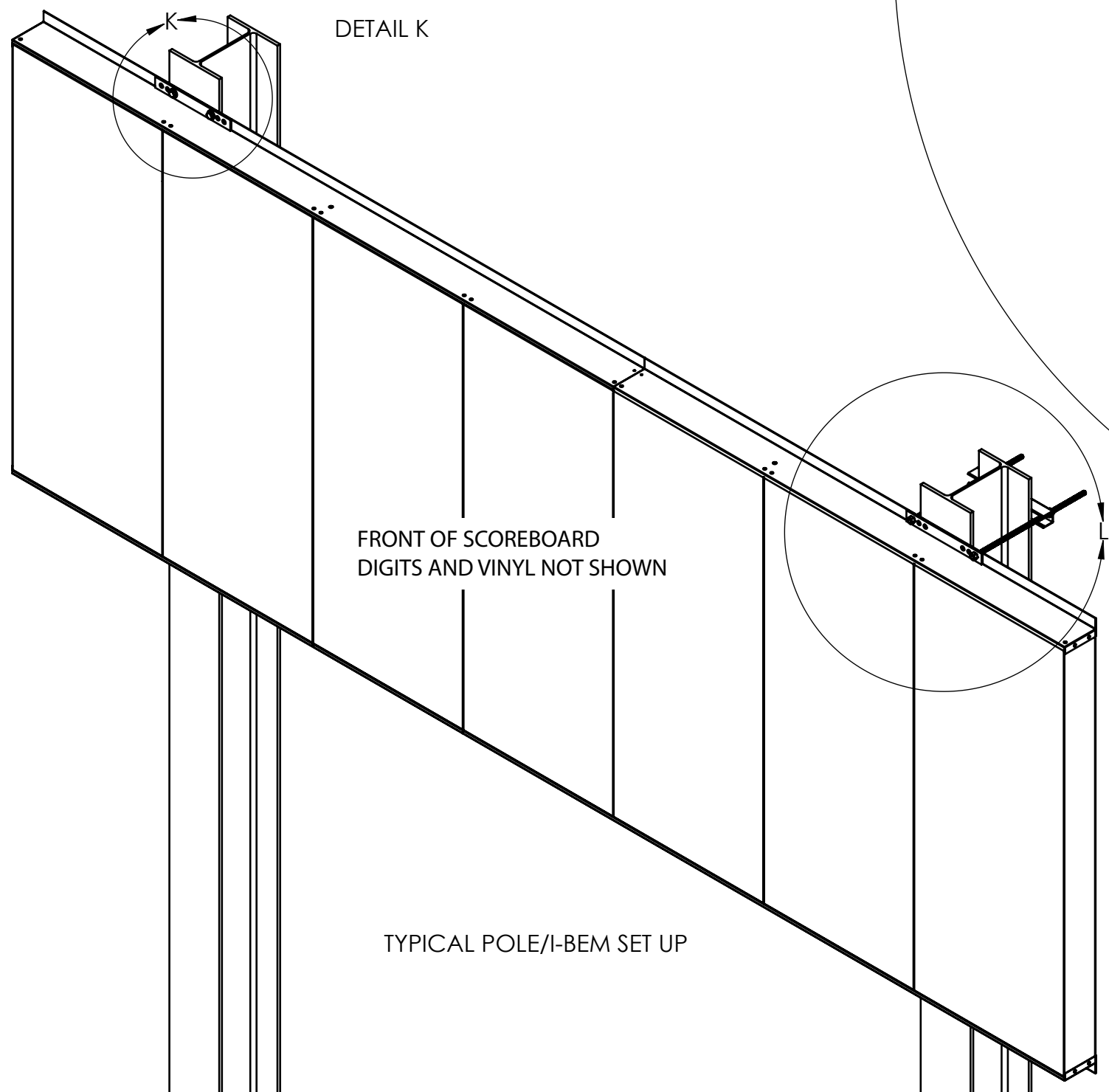
FRONT VIEW



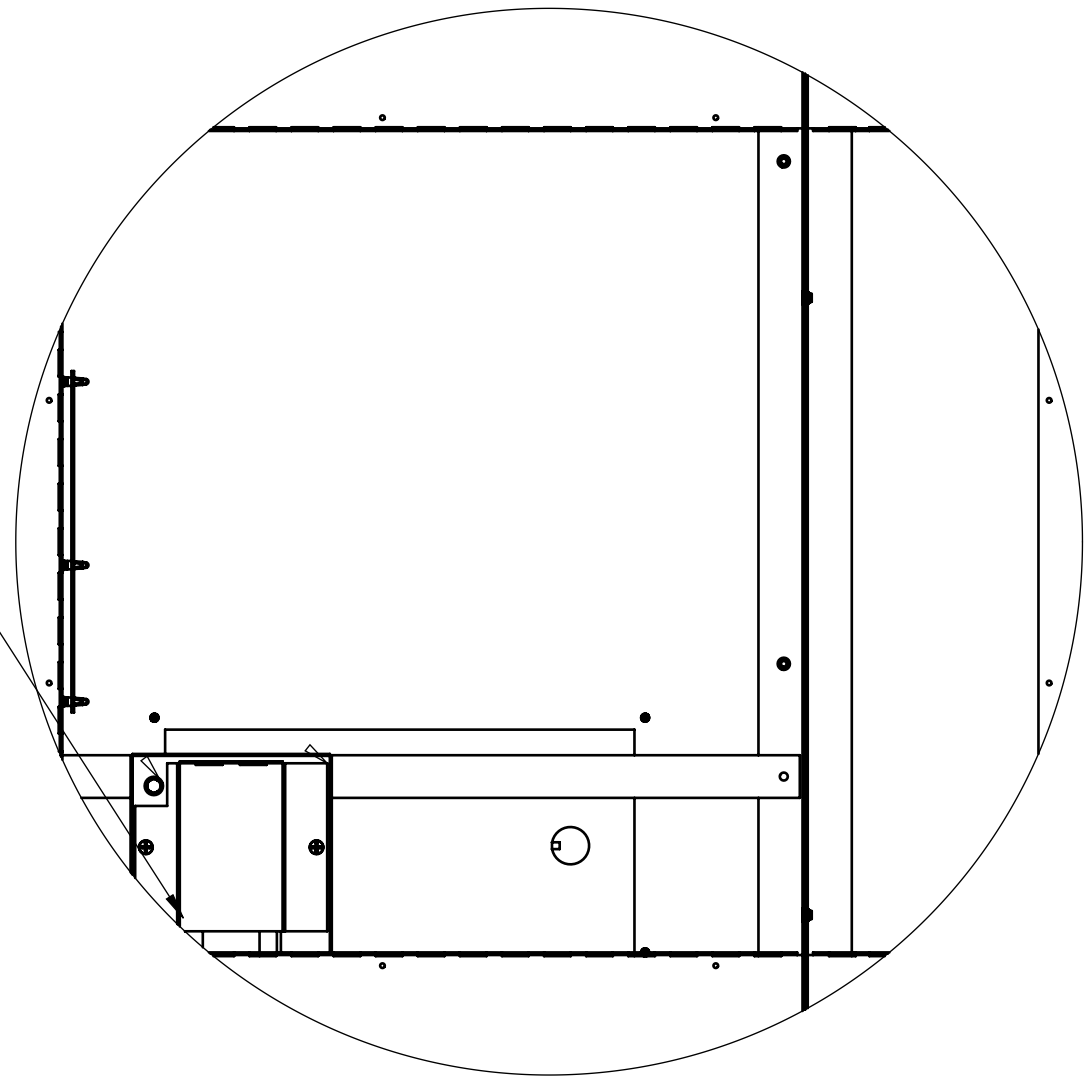
DETAIL K



DETAIL L

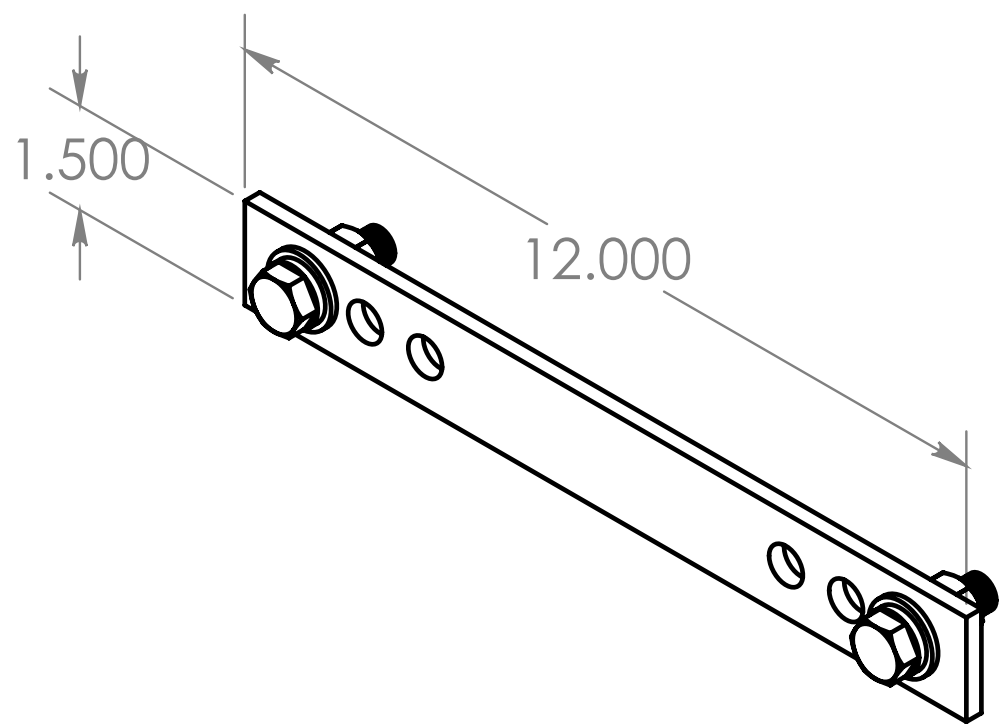
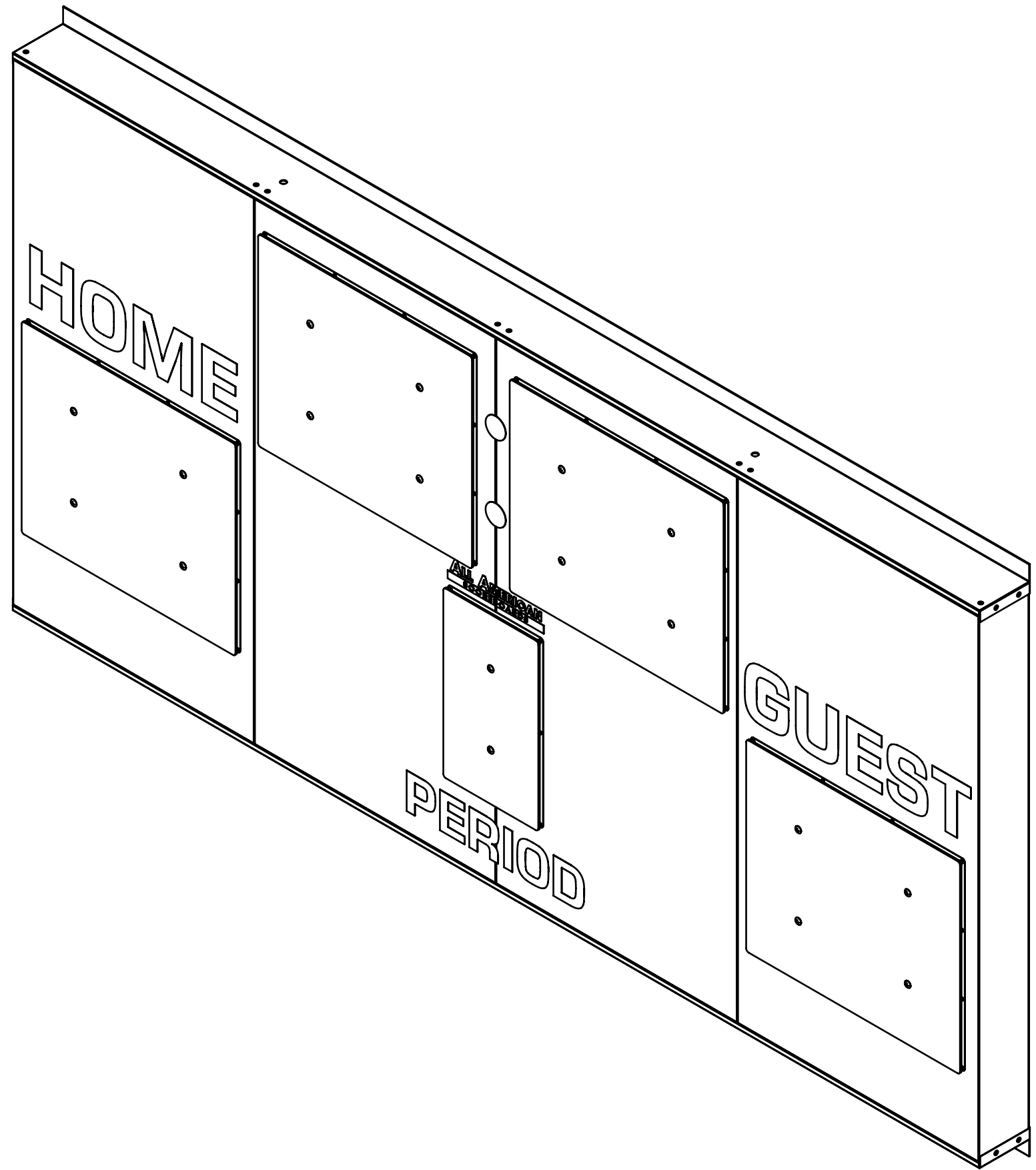


TYPICAL POLE/I-BEM SET UP



DETAIL C
SCALE 2 : 9

WITH DIGIT PANEL REMOVED FOR CLARITY



KIT, MTG FOR OD 9000 SCBDS
050-00201
4 REQ


SHIP WITH HARDWARE INSTALLED TO ENSURE
CORRECT QTY OF HARDWARE GET SHIPPED

SCOREBOARD SPECIFICATIONS

- OVERALL DIMENSIONS OF SIGN:
HEIGHT: 48.000 "
WIDTH: 96.000 "
DEPTH: 5.000 "
EST. WEIGHT: 136.711
- AREA OF SIGN - SQUARED: 40.0 SQ.FT.
- POWER SUPPLY: (2) 24V / 96W POWER SUPPLIES
INPUT: 100-277 VAC 1.2 AMPS
OUTPUT: 24VDC 96 WATTS MAX
- (1) 20 AMP CIRCUIT, 60Hz UL 48 & NEC COMPLIANT
- SIGN IS TO BE MANUFACTURED TO UL 48 SPECIFICATIONS.
- MAXIMUM DESIGN WINDLOAD: 35 PSF
- SIGN WILL BE SERVICEABLE BY REMOVING THE HOME
SCORE FACE TO ACCESS ELECTRICAL COMPONENTS.

ALL WIRING AND ELECTRICAL
CONNECTIONS ON THIS DISPLAY
MUST BE INSTALLED IN ACCORDANCE
WITH THE REQUIREMENTS OF ARTICLE
600 OF THE NATIONAL ELECTRICAL CODES
AND/OR OTHER APPLICABLE LOCAL CODES.
THIS INCLUDES PROPER GROUNDING AND
BONDING OF THE DISPLAY.

ATTENTION: STEEL BAR (050-00201) REQUIRED FOR STRUCTURAL INTEGRITY.

OVERALL INSTALLATION DETAILS				
ORD	---	ITEM	-----	FILE
SHEET 1 OF 1				
<div><div></div><div>Everbrite 401 South Main St. P.O. Box 100 Pardeeville, WI. 53954 608-429-2121</div></div>				
These drawings are the exclusive property of Everbrite, Inc. Use of, or duplication in any manner without express written permission of Everbrite, Inc. is prohibited.				
TITLE SC9082				
DRN TJE	DT 3/18/2019	SCALE 1:9	DRWG NR SC9082	REV A
CKD	DT			