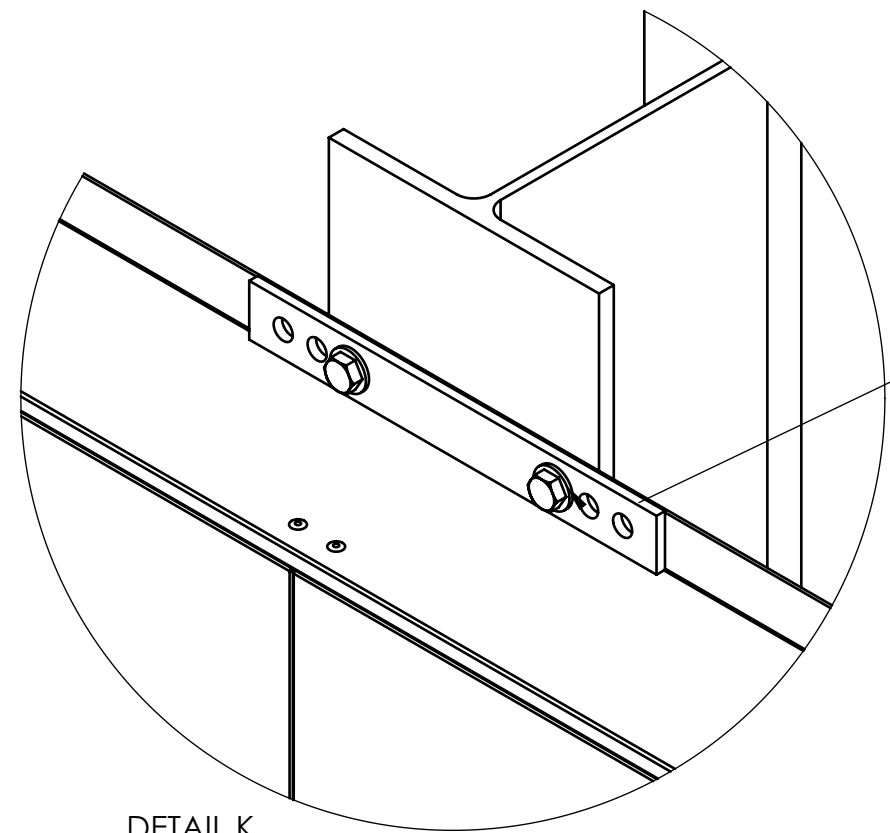
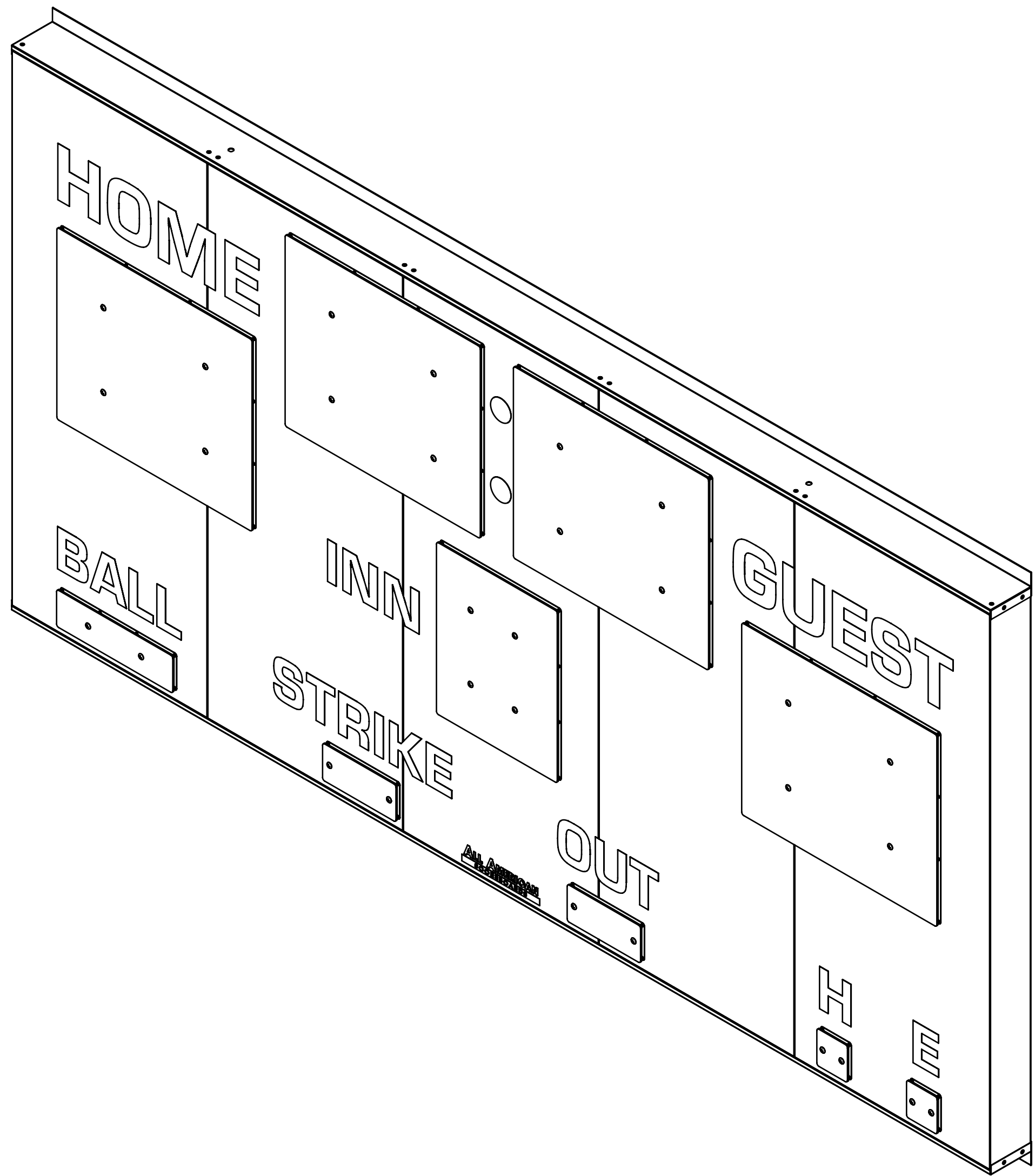
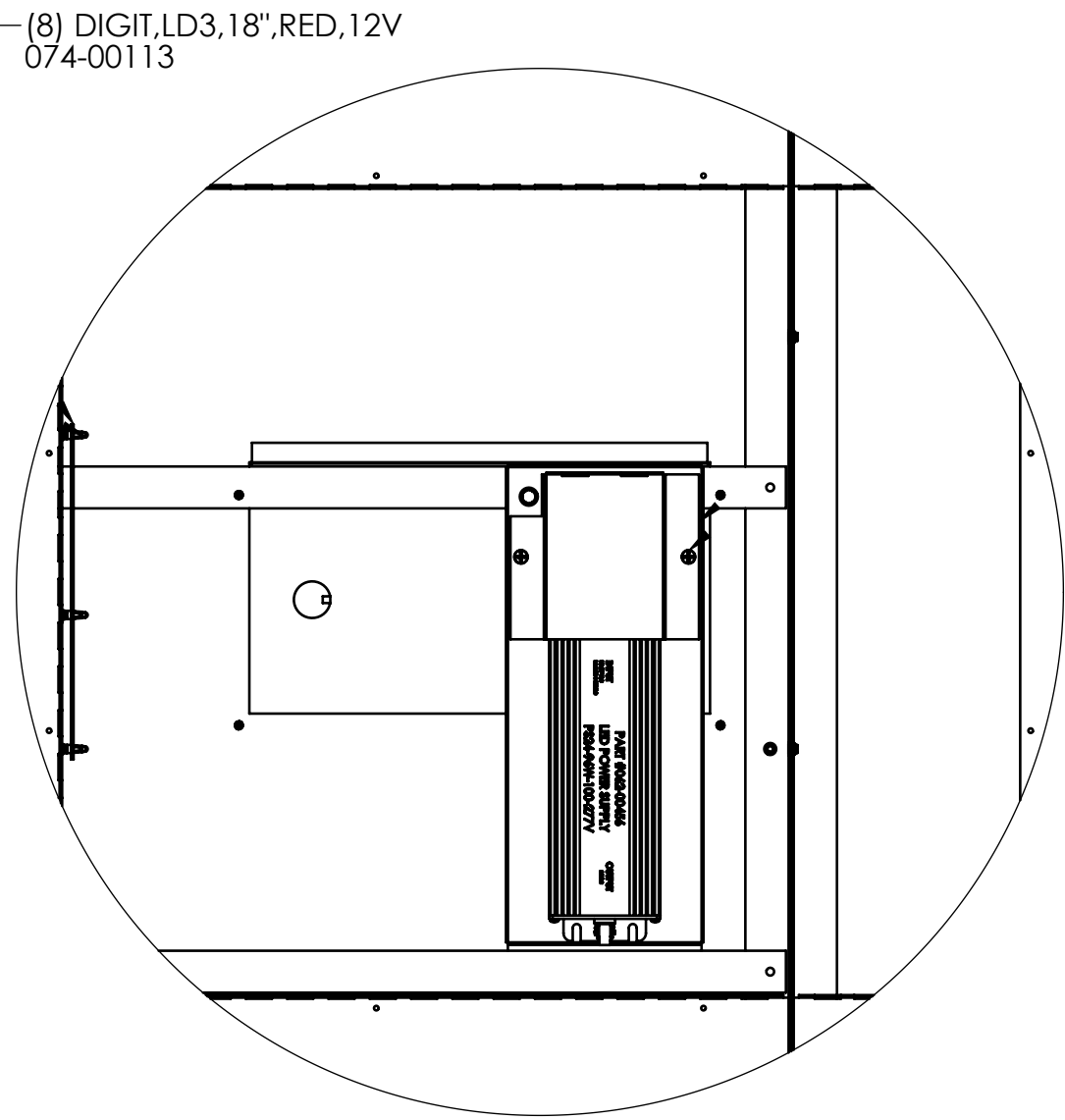
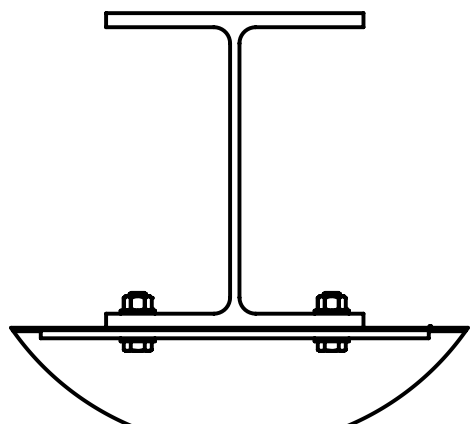


FRONT VIEW

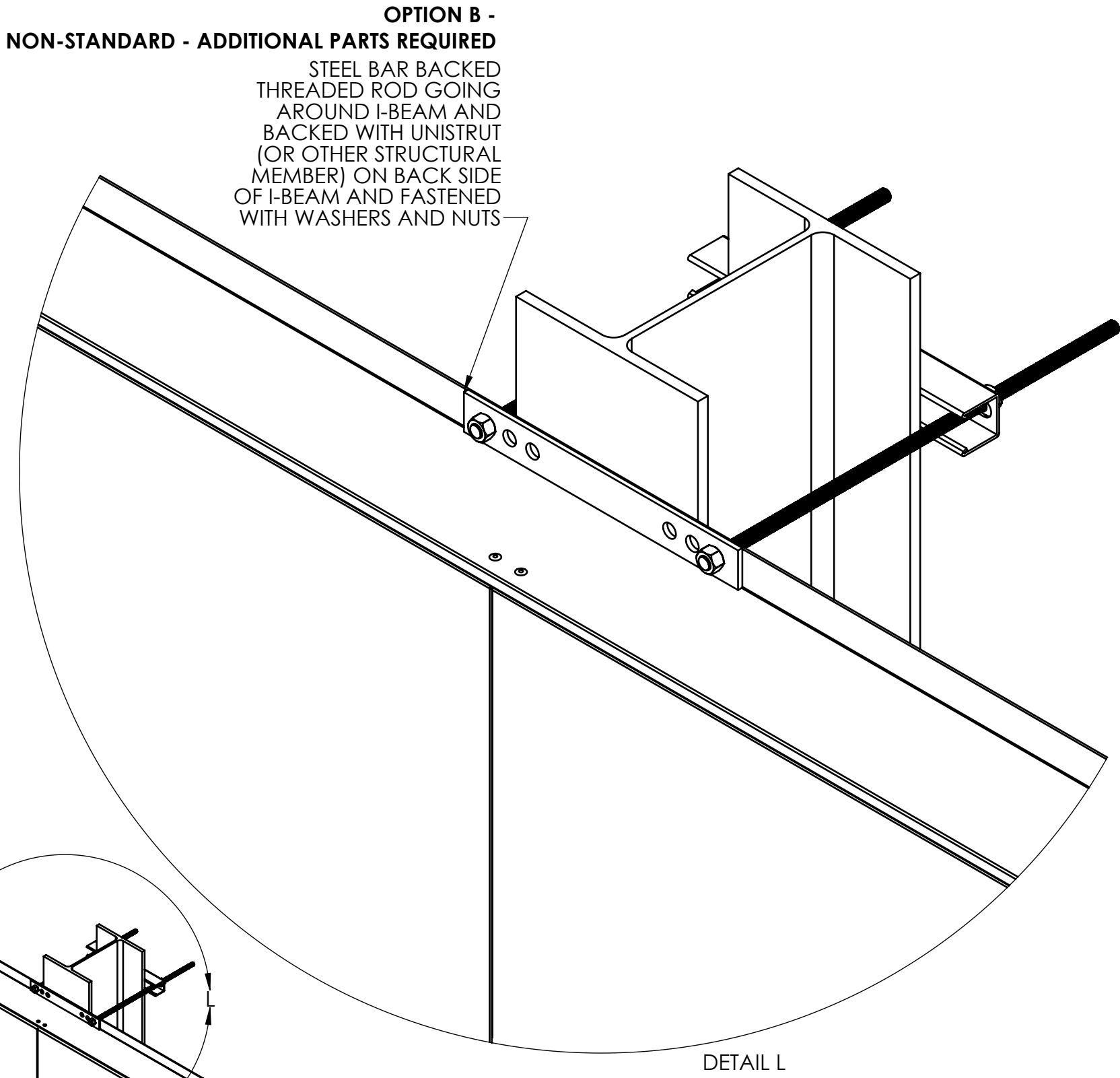


DETAIL K

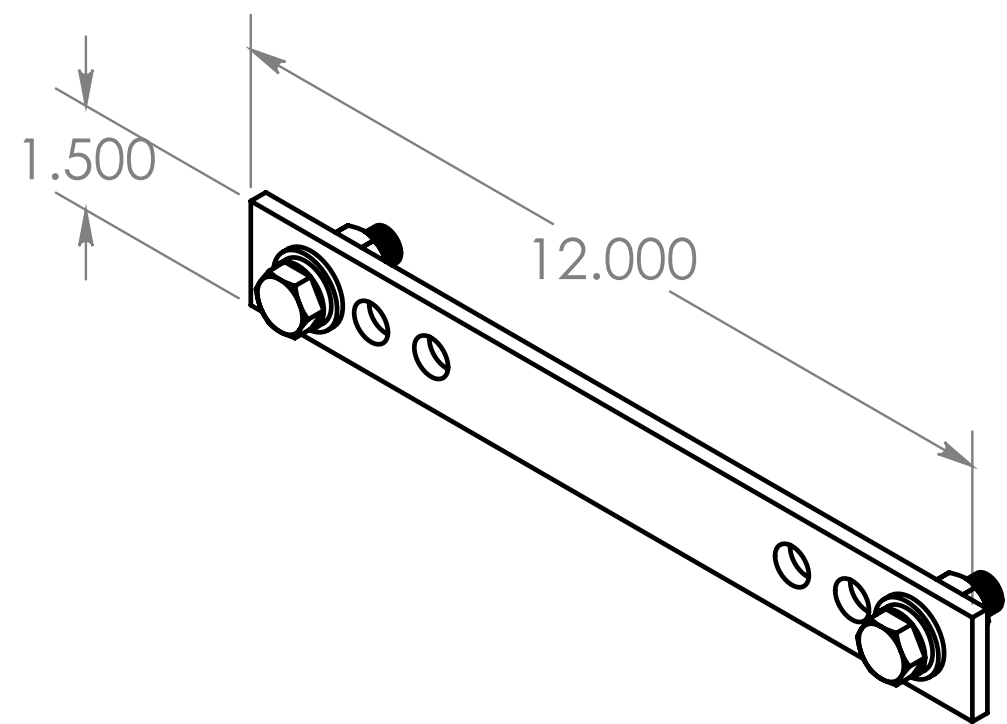
OPTION A - INCLUDED
STEEL BAR BACKED BOLTS
DIRECTLY DRILLED INTO I-
BEAM AND BACKED WITH
NUTS.



Top view of Option A.



DETAIL L



KIT, MTG FOR OD 9000 SCBDS
050-00201
4 REQ, MINIMUM
(Each installed on upper and lower flange)

SCOREBOARD SPECIFICATIONS

- OVERALL DIMENSIONS OF SIGN:
HEIGHT: 60.000 "
WIDTH: 120.000 "
DEPTH: 5.000 "
EST. WEIGHT: 199.687
- AREA OF SIGN - SQUARED: 50 SQ.FT.
- POWER SUPPLY: (1) 24V / 96W POWER SUPPLIES
INPUT: 100-277 VAC 1.2 AMPS
OUTPUT: 24VDC 96 WATTS MAX
- (1) 20 AMP CIRCUIT, 60Hz UL 48 & NEC COMPLIANT
- SIGN IS TO BE MANUFACTURED TO UL 48 SPECIFICATIONS.
- MAXIMUM DESIGN WINDLOAD: 35 PSF
- SIGN WILL BE SERVICEABLE BY REMOVING THE HOME
SCORE FACE TO ACCESS ELECTRICAL COMPONENTS.

STRUCTURAL STEEL I BEAM (2 REQ'D)*
FURNISHED BY OTHERS


FRONT OF SCOREBOARD
DIGITS AND VINYL NOT SHOWN

TYPICAL POLE/I-BEM SET UP

ATTENTION: STEEL BAR (050-00201) REQUIRED FOR STRUCTURAL INTEGRITY.

*NOTE: Drawings shown for illustration only. Sites must be surveyed by qualified engineer.
Concrete footings required to be a minimum of 4' Deep. Depth may vary with soil conditions and local building codes. All measurements are for reference only.

ALL WIRING AND ELECTRICAL
CONNECTIONS ON THIS DISPLAY
MUST BE INSTALLED IN ACCORDANCE
WITH THE REQUIREMENTS OF ARTICLE
600 OF THE NATIONAL ELECTRICAL CODES
AND/OR OTHER APPLICABLE LOCAL CODES.
THIS INCLUDES PROPER GROUNDING AND
BONDING OF THE DISPLAY.

OVERALL INSTALLATION DETAILS				
ORD	ITEM	FILE	SHEET 1 OF 1	
<div><div></div><div>Everbrite 401 South Main St. P.O. Box 100 Pardeeville, WI. 53954 608-429-2121</div></div>		These drawings are the exclusive property of Everbrite, Inc. Use of, or duplication in any manner without express written permission of Everbrite, Inc. is prohibited.		
TITLE SC9082				
DRN TE/TJL	DT 1/24/2020	SCALE	DRWG NR BA9104	REV A
GKD	DT			